



7853

5476

3092

7855

3864

7773

7859

5664

7778

5491

7854/1

5645/1

7776

5490

7775

5419

7774

5522

7777

5610

3950



4132 4142 4151 6300 3863 7592 6301 5410 7591 3417 5613

5139 5815 5650 7652 5461 5174 6288 6197 5638 5648

6287 5646 5637 5184 5622 2279 2280

5416 5416 7957 7956 7958 4288 5649 5612 6365 5636 4289



5833

5831

5832

4931

4061

6104

5975

2099

5719

909/1

5633

3518

3807

5599

440

441

4973

5524

6574

6552/1

6552

6559

6568/1

6568

929

3713

4071

5149

4974

4975

6745

6745V

5438

6357

5420

6748

6748V

6744

6744V

7935



7842

7842/0

7726

7725

7682

7682/0

7745

7746

7827

7827

7827



7680/0



7744



7724



7820/2



7792/2



7790/0



7824



7823



3736



3737



2142



7757/0



7713/0



7856



7863



7864



7863/0



7864/0



652



7780



652/0



7780/0



665



7781



665/0



7781/0



7871/0



7872/0



7756



7756/1



7826



7825



931



7816/0



7815/0



2556



2499



4120



4121

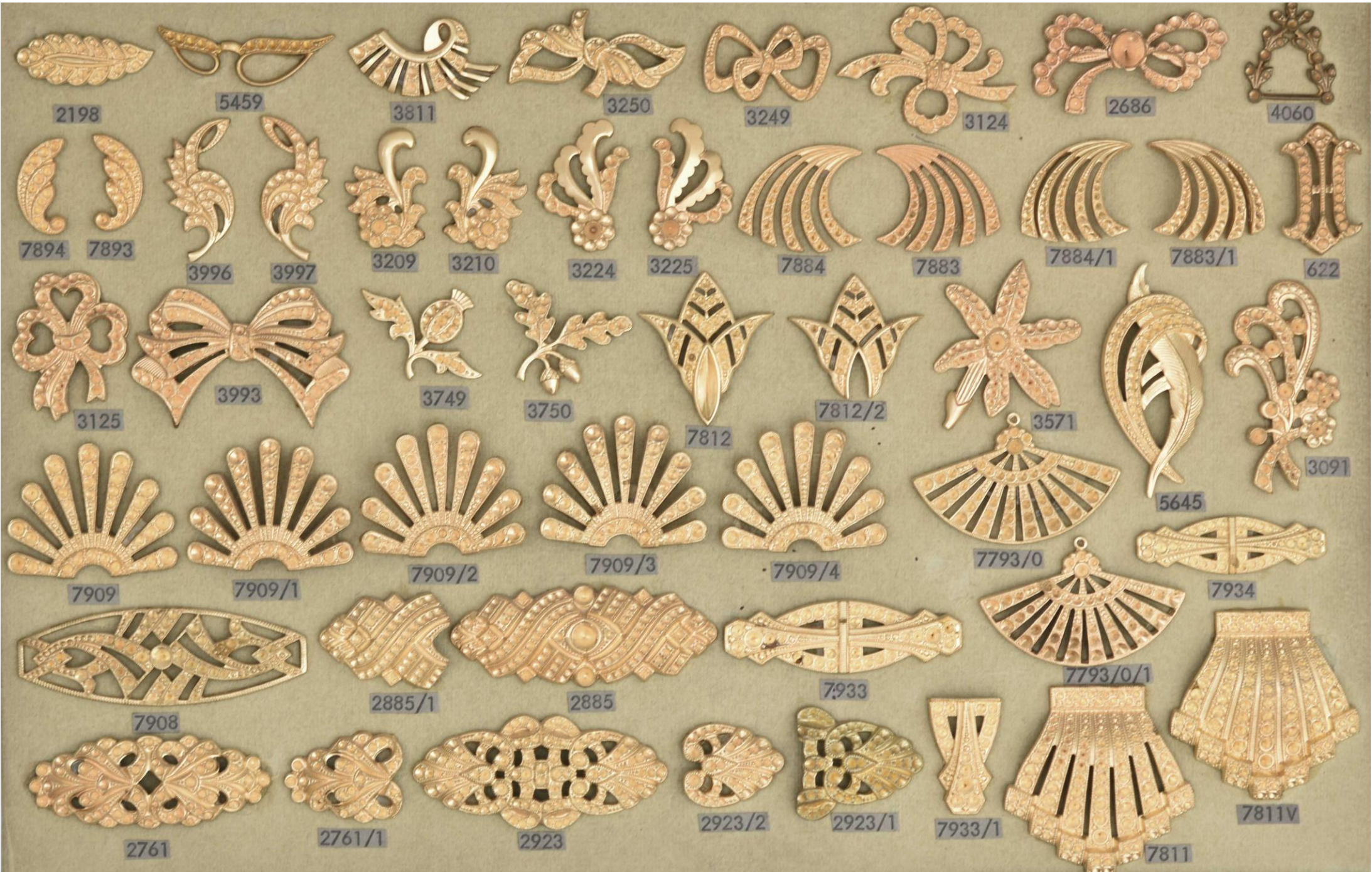


3805



6749

2617



2198

5459

3811

3250

3249

3124

2686

4060

7894

7893

3996

3997

3209

3210

3224

3225

7884

7883

7884/1

7883/1

622

3125

3993

3749

3750

7812

7812/2

3571

3091

7909

7909/1

7909/2

7909/3

7909/4

7793/0

5645

7934

7908

2885/1

2885

7933

7793/0/1

2761

2761/1

2923

2923/2

2923/1

7933/1

7811

7811V



5776

5777

4131

7875/1

7875/0

7875

2997

2998

5527

5621

5611

5513

5647

5620

5688

5465

5614

7899

5466

2999

5428

5620

5688

5465

5614

7899

5466

5455

5456

5525

2135

2104

5517

5693

3231

3233

3232

3570

2760

205



4100



4101



4102



4102/1



4103



4102/20



4104 r



4104 l



4105



4106



4107
19mm



4108
22mm



4108
25mm



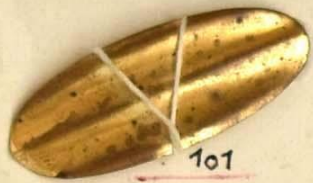
4109
30mm



4110



4111



932



313



5015



5016



5017



5041



5018



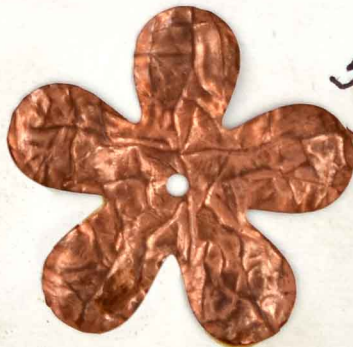
5019



5039



5042



5050



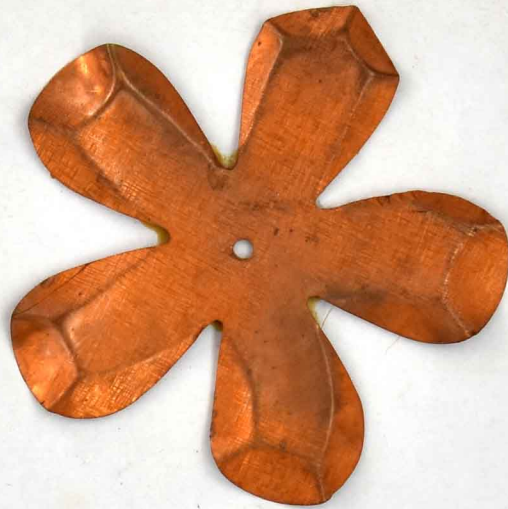
5043

5049 1/2 Haeuer

314



5020



5021



5022



5023



5024



5040

315



5025



5026



5027



5028



5029

316



5030



5031



5032



5033



5034

317



5035



5036



5037



5038



5051



5052

318



5044



5046



(5043)

5048



1585/1



1581



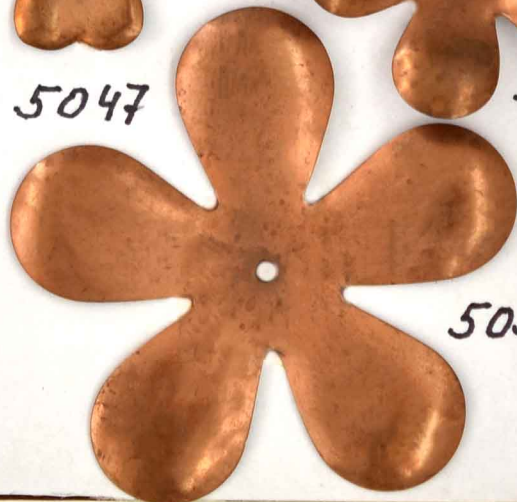
5045



5047



5055/45



5056/0,5



5053



5054



7251



7252



7253

319



7254

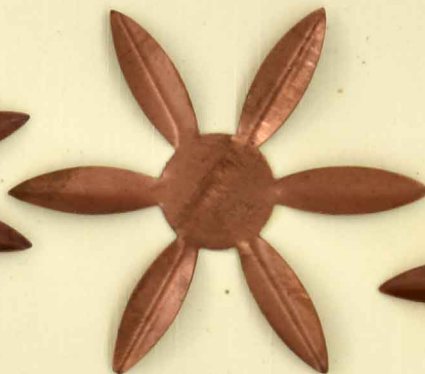
320



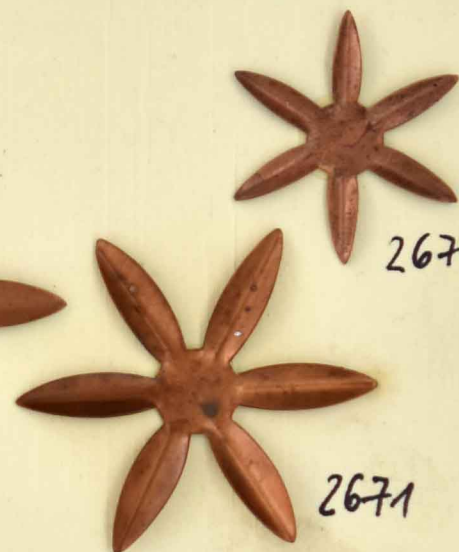
2674



2673

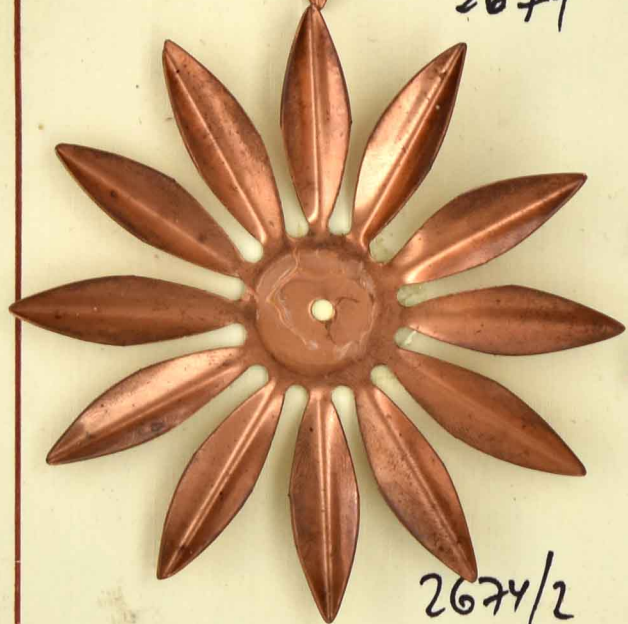


2672



2671

2671/1



2674/2



2673/2



2672/2



2671/3



2671/2

20162

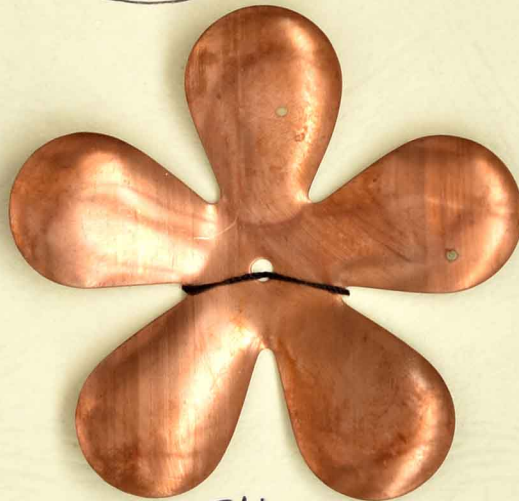


5039
Unterteil



5039
Oberenteil

+



5040
Mittelteil

+

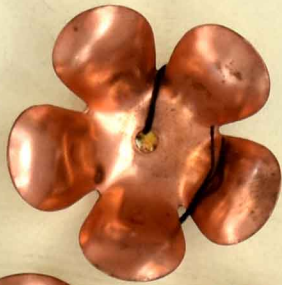


5040
Oberenteil

720611 = 80086

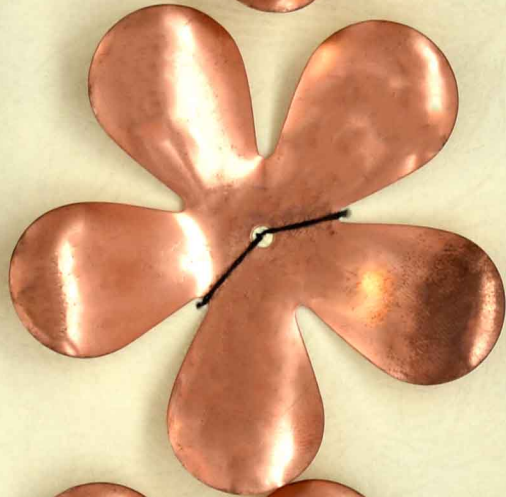
Innen leit.

5039



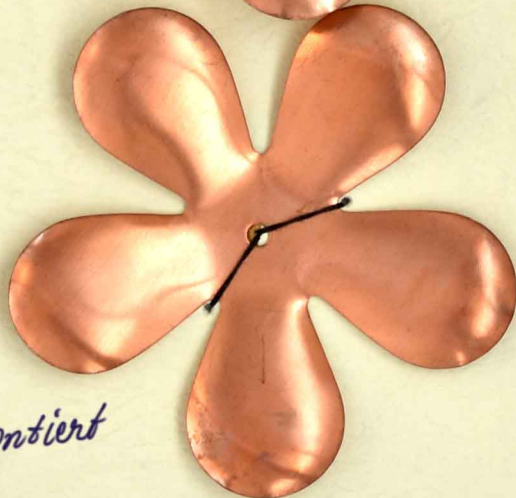
Mittelteil

5040



Unterseite

5040



Wickel: 3x5 u/w MS



H9 1912/1 x gelocht 3,1mm
mit Windmühle + Stift montiert

442



1174 Lava



1176 Lava



1384/1



7200



7203/1



7201



7202



7203



7202/1



7204



7205



7206



6244



6245



401

6246



6247



6248



6249



6250



6251



6252



6253



6870



6870/1



6871



6871/1

432



6642 flack



5859/1



6866



6866/1



6865



6865/1



5449
glatt



5450
Schrägstrich

451



5450
Schleife



5455
glatt



5450
Papier



5450
Papier



5456
glatt



5450
Feinstrich



5450
Kreis

452

5451
glatt

5452
gerippt grob

5452
Schrägstrich

5454
Hammer Schlag
rund

5452
Kreis

5452
gerippt
mittel

5452
Papier

5454
Hammer Schlag
lang

5452
Hammer Schlag
rund

5452
Hammer Schlag
lang

5452
Schlange



5409
glatt



5409
3 Stein



5409
2 Steine



5494
gerippt



5412
Papier



5413
Schlange



5411
Schrägstrich



5410
Hammer
rune



5409/1



5414/1



5413/1



5412/1



5411/1



5411/1
Schrag sti.



5410/1



5411/1
Kette

5400/1



5400
glatt



5405
gerippt



5404
Schlange



5402
Schrag-
strich



5401
Hammer-
rune



5403
Papier



5448
ohne Loch
glatt



5436
glat



5436
1 Stein



5436
3 Stoike



5437
Hammerstrich
rund



5438
Schwungstrich



5439
Papier



5440
Schlange



5441
gerippt



5442
Hammerstrich
lang



5443
Hammerstrich
klein



5445

351



5427
glatt



5428
Hammer Schlag
rund



5429
Schrägstrich



5430
Papier



5431
Schlange



5432
gerippt



5433
Hammer Schlag
lang



5434
Hammer Schlag
klein



5435
Feinstrich